



## Equipment



*Cruise control.*



*Front passenger's airbag.*

### Vauxhall Assistance and warranties\*

**Standard features** • A one-year unlimited mileage manufacturer's warranty • Second and third year no-fee customer option warranty up to 60,000 miles (from first registration) • Vauxhall Assistance for 12 months from first registration (see page 38) • Roadside breakdown cover in years two and three (subject to vehicle being serviced at a Vauxhall dealer) • Six years' body panel anti-perforation warranty

### Safety

**Standard features** • Driver's and front passenger's airbags • Twin side-impact protection beams • Strengthened ladder-frame chassis with passenger safety cell • Burst-proof door locks and anti-jam door design • Height-adjustable inertia-reel front and outer rear seatbelts (front only on Sport models) • Pyrotechnic front body-lock seatbelt pretensioner system • Centre static rear seat lap belt • Child-proof locks on rear doors • Laminated windscreen • Retractable centre rear seat head restraint (Estate models only) • Fully adjustable front and outer rear seat head restraints

Additional features	Sport models			Estate models		
	RS	Olympus	Olympus V6	Limited	Limited V6	Olympus
Electronic park/brake pedal safety interlock on models with automatic transmission	•			•	•	•
Electronic anti-lock braking system (ABS)	○ <sup>1</sup>	○	•	○ <sup>1</sup>	•	○ <sup>1</sup>

### Facia, instruments and controls

**Standard features** • Rev counter, trip odometer, four-wheel drive indicator, fuel level and water temperature gauges • Multi-function display panel showing time, date, outside air temperature (with ice warning) and audio display • 2WD/4WD 'shift-on-the-move' selection switch • Automatic self-correcting RDS-time clock • Tilttable steering column in combination with leather-covered four-spoke steering wheel

Additional features	Sport models			Estate models		
	RS	Olympus	Olympus V6	Limited	Limited V6	Olympus
Driver information centre incorporating check control warning display and seven-function trip computer**			•		•	
Cruise control with 'tap-up/tap-down' facility	○ <sup>2</sup>		•	○ <sup>2</sup>	•	○ <sup>2</sup>
Silver-grey sports instruments		•	•			•

### Audio equipment (see page 39 for details)

**Standard features** • CDR 500 stereo radio/compact disc player with remote display and six speakers • Radio data system (RDS EON) with Traffic Programme • Flexible roof-mounted aerial

Additional features	Sport models			Estate models		
	RS	Olympus	Olympus V6	Limited	Limited V6	Olympus
CAR 400 stereo radio/cassette player with remote display and six speakers	N/C	N/C	N/C	N/C	N/C	N/C
CCR 600 stereo radio/cassette player with remote display and six speakers <sup>3</sup>	○	○	○	○	○	○
NCDR 1100 stereo radio/compact disc player with CD-ROM-driven satellite navigation system				○	○	○
NCDR 1500 stereo radio/compact disc player with integral carphone and CD-ROM-driven satellite navigation system				○	○	○
Factory-fit telephone wiring loom (includes wiring and aerial, does not include handset)	○	○	○	○	○	○

### Seating and upholstery

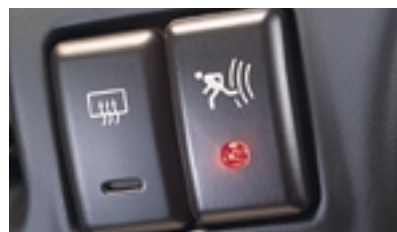
Features	Sport models			Estate models		
	RS	Olympus	Olympus V6	Limited	Limited V6	Olympus
60/40 split-folding rear seat				•	•	•
50/50 split-folding multi-position rear seat back	•	•	•			
Map pockets on front seat backs				•	•	
Driver's seat height adjuster	•	•	•	•	•	•
Vent cloth seat trim	•			•	•	
Chequers cloth seat trim with leather-trimmed side bolsters		•	•			•
Leather seat trim	LP			LP	LP	
Electrically heated front seats with temperature control	LP	•	•	LP	LP	•



Remote control central locking system.



Air-conditioning.



Remote control security alarm system.

## Exterior protection and styling

Standard features • Flush-fitting door handles • Body-colour door handles • Body-colour door mirrors						
Additional features	Sport models			Estate models		
	RS	Olympus	Olympus V6	Limited	Limited V6	Olympus
Black body side-protection mouldings	•	• <sup>4</sup>	• <sup>4</sup>	•	•	• <sup>4</sup>
Black wheel arch extensions	•	• <sup>4</sup>	• <sup>4</sup>	•	•	• <sup>4</sup>
Body-colour bumper inserts	•	•	•	•	•	•
Soft vinyl spare wheel cover with graphics	•			•		
Body-colour hard spare wheel cover	○	•	•	○	•	•
Soft plastic front style bar	SP	SP	SP	SP	SP	SP
Sidesteps	SP	SP	SP	SP	SP	SP

## Heating and ventilation

Standard features • Air blend heater with four-speed fan and air recirculation system • Rear passenger compartment ventilation ducts demist vents • Adjustable face-level air vents and front side window						
Additional features	Sport models			Estate models		
	RS	Olympus	Olympus V6	Limited	Limited V6	Olympus
Air-conditioning	○	○	•	○	•	•

## Exterior lighting

Standard features • Lights-on audible warning • Twin reversing lights and twin rear fog lights • High-level centre brake light • Hazard warning lights and side repeat indicators • Electric headlight beam levelling • Red 'door-open' warning lights on all side doors • Kerb illumination lights • Front fog lights						
Additional features	Sport models			Estate models		
	RS	Olympus	Olympus V6	Limited	Limited V6	Olympus
Front driving lights	SP	SP	SP	SP	SP	SP
High-pressure twin-jet headlight washers	LP	•	•	LP	LP	•

## Additional interior features

Standard features • Passenger assist handles • Front door pockets • Dipping rear-view mirror and twin sunvisors with driver's and front passenger's vanity mirrors • Lidded storage compartment between front seats and front console-mounted twin drinks holders • Carpeted passengers' and luggage compartment with load restraint lashing eyes • Tailgate net pocket • Coin holder • Cigar lighter/accessory socket • Front and rear ashtrays						
Additional features	Sport models			Estate models		
	RS	Olympus	Olympus V6	Limited	Limited V6	Olympus
Retractable luggage compartment cover				•	•	•
Vertical load-restraining net				○	○	○
Rear console-mounted retractable twin drinks holder				•	•	•
Floor mats with 'Olympus' motif		•	•			•

• = Standard equipment.  
○ = Optional at extra cost.  
N/C = No-cost option.

\* = Warranty is only available on vehicles sourced from Vauxhall Motors Ltd. Terms and conditions apply – please see your Vauxhall dealer for details.

\*\* = Check control warning display features: engine oil level, engine coolant level, automatic transmission control (where fitted), front brake pad wear, windscreen washer fluid level, bulb test for head/tail and brake lights, and brake lights fuse. Trip computer features: stopwatch, instantaneous and average fuel consumption, fuel consumed, average speed, distance travelled and range based on fuel remaining.

1 = All DTi models with automatic transmission have ABS as standard.

2 = Optional on DTi models only.

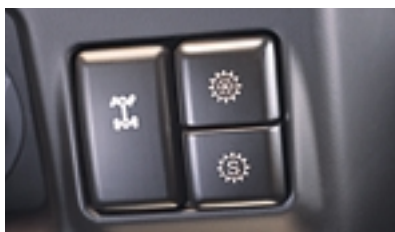
3 = Additional boot-mounted four-disc compact disc autochanger is available as a Vauxhall accessory.

4 = Star Silver Olympus models include body-colour bumpers, side protection mouldings and wheel arch extensions.

### Special extra-cost option packs

LP = Leather pack comprising leather seat facings, head restraints and door trim insert panels, electrically heated front seats, high-pressure twin-jet headlight washers and heated windscreen washer nozzles.

SP = Style pack comprising soft plastic front style bar, front driving lights and sidesteps.



Selectable four-wheel drive.



Tilt/removable glass rear sunroof.



Electrically operated front windows.

## Security

**Standard features** • Security code and remote display protection for audio equipment • Electronic engine deadlock immobiliser • Remote control central locking (doors, tailgate and fuel flap) with security deadlocks • Remote control ultrasonic security alarm system incorporating rear side window sensors • Lockable glovebox • Visible Vehicle Identification Number (VIN) • Locking nuts for alloy wheels

## Mechanical

**Standard features** • Five-speed manual gearbox • Power-assisted steering • Catalytic converter • Selectable four-wheel drive with 'shift-on-the-move' facility • High- and low-ratio transfer box • Underbody protection guards

Additional features	Sport models			Estate models		
	RS	Olympus	Olympus V6	Limited	Limited V6	Olympus
Four-speed automatic transmission (DTi and V6 only)	○ <sup>1</sup>			○ <sup>1</sup>	○	○ <sup>1</sup>
Limited-slip differential (rear axle)	○	○	○	○	○	○

## Interior lighting

**Standard features** • Twin front map reading lights • Illuminated load area • Interior courtesy light operated by door switches

## Wheels and tyres

Features	Sport models			Estate models		
	RS	Olympus	Olympus V6	Limited	Limited V6	Olympus
16-inch six-spoke alloy wheels (steel spare) with 245/70 R 16 all-weather tyres	●	●	●	●	●	●

## Exterior and convenience features

**Standard features** • Electrically operated front windows with safety autoreverse and one-touch facility • Electrically adjustable/heated door mirrors • Remote control fuel flap • Twin-jet windscreen washer nozzles • Intermittent rear window wash/wipe • Front and rear formed mudflaps • Green-tinted glass • Heated rear window

Additional features	Sport models			Estate models		
	RS	Olympus	Olympus V6	Limited	Limited V6	Olympus
Electrically operated slide/tilt glass sunroof with interior blind				○	○	○
Tilt/removable glass front sunroof	○	●	●			
Electrically operated rear windows with safety autoreverse and child isolation facility				●	●	●
Lift-up opening tailgate window with twin gas-assist struts				●	●	●
Heated twin-jet windscreen washer nozzles	LP	●	●	LP	LP	●
Removable tow bar (includes single-plug, 12N electrics)	○	○	○	○	○	○
Two-coat metallic or pearlescent paint	○	●	●	○	●	●
Black roof rails <sup>5</sup>	●	●	●	●	●	●

● = Standard equipment.  
○ = Optional at extra cost.

<sup>1</sup> = All DTi models with automatic transmission have ABS as standard.

<sup>5</sup> = Must be used with separate base carrier (available as a Vauxhall accessory) if luggage is to be carried on the roof.

### Special extra-cost option pack

LP = Leather pack comprising leather seat facings, head restraints and door trim insert panels, electrically heated front seats, high-pressure twin-jet headlight washers and heated windscreen washer nozzles is optional at extra cost.

# Technical data

## Engines

<b>2.2i 16v ECOTEC-4 Petrol</b> Capacity: 2198cc. Max. power: 136PS (100kW) @ 5200rpm. Max. torque: 200Nm (147.5 lb.ft.) @ 2500rpm. Compression ratio: 10.0:1	<b>Configuration:</b> Four-cylinder, 16-valve unit with two belt-driven overhead camshafts, alloy cylinder head, hydraulic tappets, twin contra-rotating balancer shafts and ECM controlled electric cooling fan. Integrated (oil/water) oil cooler. <b>Engine management:</b> Delphi Multec-S system. Computer-controlled multi-point sequential port fuel injection, tuned length intake tracts. Direct ignition system with dual spark coil and selective knock control. <b>Emission control:</b> Electronic exhaust gas recirculation. Secondary air injection. Activated charcoal evaporation control canister. Lambda sensor and twin three-way closed-loop catalytic converters. Euro 3 emission compliant.
<b>2.2DTi 16v ECOTEC-4 Diesel</b> Capacity: 2171cc. Max. power: 115PS (85kW) @ 3800rpm. Max. torque: 260Nm (191.8 lb.ft.) @ 1900-2500rpm. Compression ratio: 18.5:1	<b>Configuration:</b> Four-cylinder, 16-valve unit with chain-driven single overhead camshaft and twin contra-rotating balancer shafts, alloy cylinder head, hydraulic tappets, electric cooling fan and integrated (oil/water) oil cooler/filter. Electrically heated fuel filter. Water-cooled turbocharger with air/air intercooler. Torsional vibration damper. <b>Engine management:</b> Motronic diesel control system with hot film air mass metering, Bosch VP44 high-pressure radial injector pump and direct injection. 'Drive-by-wire' electronic accelerator pedal. <b>Emission control:</b> Electronic exhaust gas recirculation. Two-way oxidising catalytic converter. Euro 3 emission compliant.
<b>3.2i V6 24v Petrol</b> Capacity: 3165cc. Max. power: 205PS (151kW) @ 5400rpm. Max. torque: 290Nm (214 lb.ft.) @ 3000rpm. Compression ratio: 9.4:1	<b>Configuration:</b> V6, 24-valve unit with two belt-driven overhead camshafts per bank, alloy cylinder heads, alloy crankcase, sodium-filled exhaust valves, variable intake manifold, mechanical tappets and temperature-controlled viscous-coupled cooling fan. <b>Engine management:</b> Delphi Multec-S system. Direct ignition system with dual spark control. Computer-controlled sequential port fuel injection with knock control and air mass metering. <b>Emission control:</b> Electronic exhaust gas recirculation. Activated charcoal evaporation control canister. Lambda sensor and twin three-way closed-loop catalytic converters. Euro 3 emission compliant.



2.2i 16-valve petrol engine.



2.2DTi 16-valve diesel engine.



3.2i V6 24-valve petrol engine.

## Engine availability and insurance groups

Engine	RS	Sport models Olympus	Olympus V6	Limited	Estate models Limited V6	Olympus
2.2i 16v	–	● (9E)	–	● (9E)	–	–
2.2DTi 16v	● (9E)	–	–	● (10E)	–	● (10E)
3.2i V6 24v	–	–	● (12E)	–	● (12E)	–

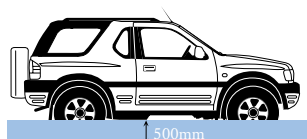
**Please note:** Figures in brackets indicate insurance groups as recommended by the Association of British Insurers. The engines listed are only available on models where a bullet point (●) is shown.

## Performance and fuel economy

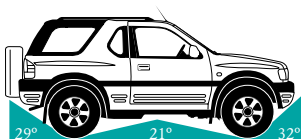
Model	Transmission	Performance (manufacturer's figures)			Fuel economy mpg (litres/100km)			CO <sub>2</sub> emissions (g/km)
		Max speed (mph)	Acceleration (secs) 0-60mph	30-50mph (4th gear)	Urban driving	Extra-urban driving	Combined figure	
2.2i 16v Sport	manual	101	12.6	10.6	17.9 (15.8)	31.7 (8.9)	24.8 (11.4)	273
2.2DTi 16v Sport	manual	96	12.9	7.2	25.4 (11.1)	39.8 (7.1)	32.8 (8.6)	232
2.2DTi 16v Sport	automatic	97	14.0	–	23.0 (12.3)	35.8 (7.9)	29.7 (9.5)	257
3.2i 24v V6 Sport	manual	114	9.6	8.6	15.9 (17.8)	27.7 (10.2)	21.7 (13.0)	312
2.2i 16v Estate	manual	101	13.4	11.6	17.9 (15.8)	31.7 (8.9)	24.8 (11.4)	273
2.2DTi 16v Estate	manual	96	13.7	8.1	25.2 (11.2)	39.2 (7.2)	32.5 (8.7)	235
2.2DTi 16v Estate	automatic	98	14.6	–	23.0 (12.3)	35.8 (7.9)	29.7 (9.5)	257
3.2i V6 24v Estate	manual	114	10.0	9.0	15.7 (18.0)	26.9 (10.5)	21.4 (13.2)	316
3.2i V6 24v Estate	automatic	116	10.1	–	14.3 (19.8)	25.2 (11.2)	19.8 (14.3)	344

The fuel consumption figures shown comply with EC directive 1999/100 to provide a realistic indication of fuel consumption by taking into account everyday driving conditions, such as cold starts, acceleration and braking. These figures take account of the vehicle's kerbweight, ascertained in accordance with the above regulation. **Important:** the results given relate to the particular car tested. Variations in trim level and equipment may result in slightly higher fuel consumption and CO<sub>2</sub> emission levels than those quoted. Driving style, road and traffic conditions, vehicle mileage and standard of maintenance may also affect fuel consumption; therefore the results do not express or imply any guarantee of fuel consumption attainable.

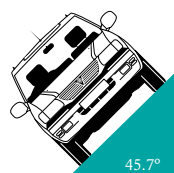
## Sport



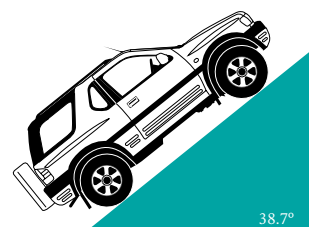
Maximum recommended wading depth at 3mph.



Maximum departure, ramp and approach angles when off-roading.

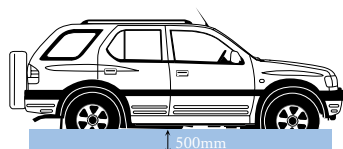


The maximum angle of tilt.\*

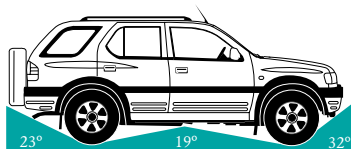


The safe maximum angle of ascent.

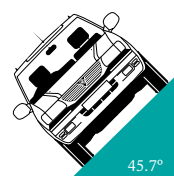
## Estate



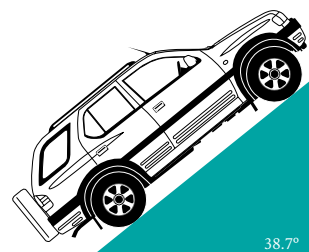
Maximum recommended wading depth at 3mph.



Maximum departure, ramp and approach angles when off-roading.



The maximum angle of tilt.\*



The safe maximum angle of ascent.

\*Angle indicated is the static point of balance. Additional loads or driving conditions could reduce the maximum angle of tilt.

## Weights and towing data/maximum gradeability\*\*

Engine	Kerbweight (Gross vehicle weight) kg		Maximum towing weights (kg) Trailer with brakes (without brakes)		Transfer box ratio High ratio (low ratio)	
	Sport	Estate	Sport	Estate	Sport	Estate
2.2i 16v manual	1706 (2300)	1759 (2400)	2400 (750)	2600 (750)	49.0% (80.0%)	45.0% (80.0%)
2.2DTi 16v manual	1762 (2300)	1816 (2450)	2400 (750)	2800 (750)	56.0% (80.0%)	51.2% (80.0%)
2.2DTi 16v automatic	1781 (2300)	1835 (2450)	2400 (750)	2800 (750)	54.6% (80.0%)	52.0% (80.0%)
3.2i V6 24v manual	1786 (2450)	1813 (2450)	2400 (750)	2800 (750)	54.0% (80.0%)	54.0% (80.0%)
3.2i V6 24v automatic	–	1829 (2450)	–	2800 (750)	–	52.7% (80.0%)

\*\*Gradeability figures are theoretical for vehicles in standard condition at full gross vehicle weight, for guidance only. Actual gradeability will depend on tyre-to-surface adhesion.

**Gross vehicle weight** is the total permissible weight of the vehicle including passengers and their luggage. To determine total carrying capacity, deduct kerbweight from gross vehicle weight.

The **maximum roof rack loading** should not exceed a total of 100kg on-road, Sport models should be reduced to 30kg off-road and Estate models reduced to 60kg off-road. The **maximum towing weights** are based on the ability of the car – with two occupants of 70kg each – to restart on a 12% gradient, which is approximately 1 in 8.3 at sea level. At altitudes above 1500 metres, the engine output may drop with a corresponding reduction in towing capability. Any extra weight, such as luggage or additional passengers, should be deducted from the maximum towing weight. Always fit Vauxhall towing attachments and accessories available from your Vauxhall dealer. They are designed specifically for Vauxhall models and carry a 12-month guarantee.

Trailer noseweight: Sport 96kg, Estate 112kg.

## Transmission ratios

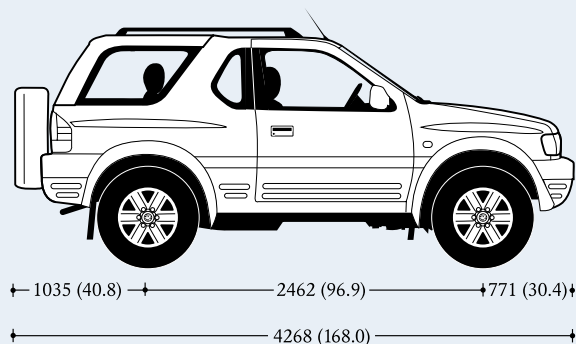
Manual	Clutch diameter	Gear ratios (mph/1000rpm – high ratio)						Reverse	Final drive ratio
		1	2	3	4	5			
2.2i 16v Sport/Estate	240mm	3.77:1 (4.6)	2.25:1 (7.8)	1.40:1 (12.5)	1.00:1 (17.5)	0.81:1 (21.6)		3.87:1	4.78:1
2.2DTi 16v Sport/Estate	240mm	3.77:1 (4.9)	2.25:1 (8.1)	1.40:1 (13.1)	1.00:1 (18.3)	0.81:1 (22.6)		3.87:1	4.56:1
3.2i V6 24v Sport/Estate	260mm	3.77:1 (5.3)	2.25:1 (8.8)	1.40:1 (14.2)	1.00:1 (19.8)	0.81:1 (24.5)		3.87:1	4.30:1
<b>Automatic</b>									
2.2DTi 16v Sport/Estate	–	2.86:1	1.62:1	1.00:1	0.72:1	–		2.00:1	4.56:1
3.2i V6 24v Estate	–	2.86:1	1.62:1	1.00:1	0.72:1	–		2.00:1	4.10:1

**Please note:** Transfer box ratios: high 1.00:1, low 2.05:1.

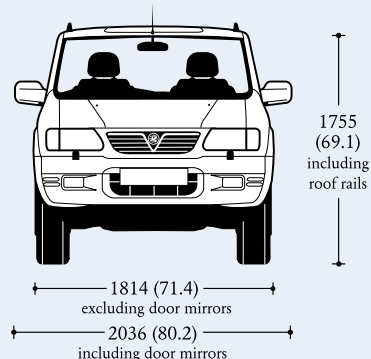


## Exterior dimensions millimetres (inches)

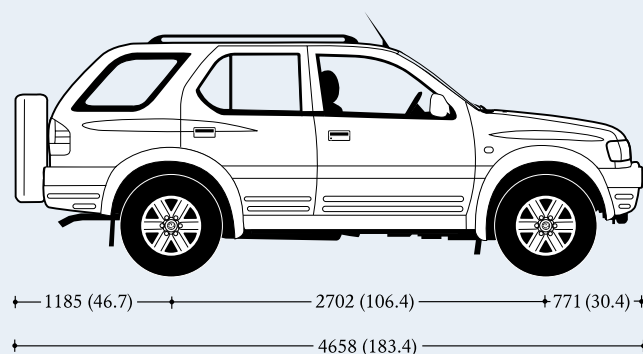
### Sport



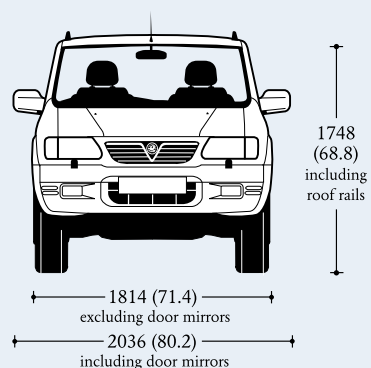
216  
(8.50)  
ground  
clearance



### Estate



215  
(8.47)  
ground  
clearance



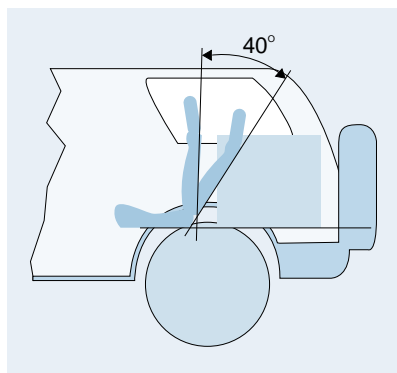
Estate luggage compartment – rear seats down.



Tailgate net pocket.



Load restraint lashing eye.



The rear seat backs on Sport models (50/50 split) each recline through 40 degrees enabling them to be fixed in any one of ten positions. Estate models are fitted with a 60/40 split-folding rear seat which, like the Sport's, can be folded forward to create extra usable luggage space.

## Luggage compartment dimensions millimetres (inches)

	Sport	Estate
Maximum floor length – rear seat down	1057 (41.6)	1639 (64.5)
Maximum floor length – rear seat up	676 (26.6)	1017 (40.1)
Maximum width rear floor	1267 (49.9)	1380 (54.3)
Width between wheel arches	1000 (39.4)	994 (39.2)
Height from load floor to roof	947 (37.3)	974 (38.4)
Height rear door aperture	831 (32.7)	839 (33.0)

## Luggage capacities (VDA method) – litres (cu.ft.)

	Sport	Estate
Rear seat up (to top of seat backs)	321 (11.3)	518 (18.3)
Rear seat down (to roof)	1137 (40.2)	1790 (63.2)



*Ventilated front disc brakes.*



*Front suspension.*



*Rear suspension.*

## Service interval

20,000 miles or one year – whichever occurs sooner.

## Brakes

**Front ventilated disc brakes:** 280mm diameter.

**Rear ventilated disc brakes:** 313mm diameter.

- Dual circuit, servo-assisted system
- Three-channel electronic anti-lock braking system (ABS) optional at extra cost (standard on V6 models)
- Asbestos-free brake pads
- Front and rear brake pad wear audible warning device (not fitted with driver information centre)
- Handbrake-on and low brake fluid warning lights
- Load-sensing proportioning valve

## Suspension

**Front:** Independent, double wishbone, longitudinal torsion bar springs. Twin-tube hydraulic gas-pressure dampers. Anti-roll bar.

**Rear:** Four trailing links with Panhard rod axle location. Coil springs (tapered on Sport), progressive rate bump stops. Twin-tube hydraulic gas-pressure dampers. Anti-roll bar.

## Steering

- Power-assisted rack and pinion system
- Turning circle (kerb-to-kerb):  
Sport: 10.58m (34.7ft.)  
Estate: 11.48m (37.7ft.)
- Turns lock-to-lock: 3.64

## Transmissions

**Five-speed manual gearbox:** standard on all models. Hydraulically actuated, asbestos-free single plate clutch.

**Four-speed automatic transmission:** optional at extra cost on 2.2DTi Sport RS, 2.2DTi Estate Limited, Olympus and 3.2 V6 Estate Limited only. Electronically controlled with load sensing and warm/hot mode adaptive shift patterns (diesel models have ten different shift patterns) for improved economy and driveability plus Economy, Sport and Winter driving modes. Fluid drive with limited-slip torque converter and lock-up on third and fourth ratios eliminating wasteful slip and overheating. Oil cooler. Maintenance-free.

- Pushbutton selectable four-wheel drive with 'shift-on-the-move' facility at up to 62mph (100km/h)
- High- and low-ratio transfer box
- Limited-slip differential (rear axle) optional at extra cost

## Electrics

### Alternator:

2.2i petrol/diesel – 100 amp.

3.2i V6 petrol – 90 amp.

### Low maintenance battery:

2.2i 16v/3.2i V6 petrol – 60Ah.

2.2DTi diesel – 75Ah.

## Fuel tank capacity

**Sport:** 65 litres (14.3 gallons).

**Estate:** 75 litres (16.5 gallons).

## Body

- Aerodynamic drag coefficient: Cd 0.499 (all models)
- Separate body/steel ladder-type chassis frame construction
- Flush-fitting door and tailgate handles
- Wheel arch extensions (RS/Limited/Olympus)
- Body side-protection mouldings (RS/Limited/Olympus)
- Underbody protection equipment includes: front skid plate, sump guard, transfer box guard and fuel tank guard
- Tilt/removable glass rear sunroof (Sport RS/Olympus)
- Nearside-hinged rear door/tailgate
- Lift-up opening rear window with twin gas-assist struts (Estate)
- Spare wheel mounted on rear door
- Roof rails

## Anti-corrosion protection

- Partial use of zinc-coated sheet metal
- Zinc phosphated bodysell primed electrostatically (cathodic)
- All weld seams and joints sealed with special compound
- Paint finish applied electrostatically (cathodic)
- PVC coating applied to wheel arches and other underbody areas
- Anti-corrosion wax pumped into doors, sills and other underbody cavities
- Plastic front wheel arch liners
- Mudflaps front and rear
- Six-year body panel anti-perforation warranty

## Vauxhall Assistance

Vauxhall Assistance is operated by the AA, and is provided automatically with every new Vauxhall Frontera for a period of 12 months from first registration. It covers everything from accidents, mechanical breakdown and flat tyres to illness while driving – even lost keys. With Vauxhall Assistance, help is literally just a free\* phone call away, 24 hours a day, 365 days a year!

### Benefits include:

- Full rescue service including roadside assistance
- 'At home' service – help will be sent if there is a vehicle problem at the driver's home

- Recovery – if a problem cannot be solved at the roadside, or if someone is taken ill while driving, the driver, vehicle and all passengers will be transported to the nearest Vauxhall dealer or to any single UK destination
- Accident assistance – if your vehicle is immobilised by an accident, both the vehicle and occupants will be recovered to your choice of destination (Vauxhall recommends a Vauxhall Approved Accident Repair Centre, where appropriate)
- Vehicle theft – Vauxhall Assistance will help to keep you mobile in the unlikely event of your vehicle being stolen

\* Mobile phone users will be charged at their standard tariff.

# Audio and communications

All Frontera models feature outstanding in-car entertainment. And as part of the principle of 'free choice', you can also upgrade your equipment to take in the very latest



CAR 400 stereo radio/cassette player.



CDR 500 stereo radio/compact disc player.



CCR 600 stereo radio/cassette player.



NCDR 1100 stereo radio/CD player/navigation system.



NCDR 1500 stereo radio/CD player/carphone/navigation system.

## Audio features

**Fader and balance controls** enable playback volume to be trimmed both from front to rear and from left to right.

**Speed-dependent volume control** increases audio volume and bass boost with the speed of the car.

**Full RDS EON with Traffic Programme** offers two-fold advantages. Automatic tuning allows an RDS station to be 'locked-on' so that should the car travel in and out of various transmitter ranges, the set will automatically re-tune to the strongest signal for that station to maintain optimum reception. When locked on to an RDS station, the station name will be displayed on the multi-function display, rather than the frequency. The second advantage is the Traffic Programme, which can automatically broadcast travel flashes from the nearest BBC transmitter. Travel flashes will interrupt whatever audio programme is currently being played – even cassette or compact disc playback – at a pre-determined volume level.

navigation and communications options. Frontera audio systems are among the best protected in any car, with a four-figure security code burnt in to the memory chip at the

factory, remote read-out of audio information via the multi-function display unit and a detachable front panel on most models.

## Audio availability

	RS	Sport models		Estate models		
		Olympus	Olympus V6	Limited	Limited V6	Olympus
CAR 400	N/C	N/C	N/C	N/C	N/C	N/C
CDR 500	●	●	●	●	●	●
CCR 600	○	○	○	○	○	○
NCDR 1100				○	○	○
NCDR 1500				○	○	○

● = Standard. ○ = Optional at extra cost. N/C = No-cost option.

	CAR 400	CDR 500	CCR 600	NCDR 1100/1500
<b>General features</b>				
Four-figure security code burnt in to memory chip	●	●	●	●
Maximum output in watts per channel	20	20	20	20
Six speakers	●	●	●	●
Detachable front panel	●	●	●	
Programmable speed-dependent volume control	●	●	●	●
Separate bass/treble and fader/balance controls	●	●	●	●
<b>Tuner features</b>				
FM and MW reception	●	●	●	●
Microprocessor-controlled quartz tuning	●	●	●	●
Full RDS EON with Traffic Programme	●	●	●	●
Traffic Programme volume adjustment	●	●	●	●
Up and down manual tuning functions	●	●	●	●
Station preset buttons	6	6	6	10
Autostore function	●	●	●	●
<b>Cassette player features</b>				
Fast forward and fast reverse wind	●		●	
Cassette standby facility	●		●	
Radio reception during fast forward and rewind	●		●	
Autoreverse function	●		●	
Cassette programme search	●		●	
Automatic chrome/metal mode selection	●		●	
Dolby B noise reduction system	●		●	
<b>CD player features</b>				
Single-disc CD player		●		●
CD standby facility		●		●
Track up/down facility		●		●

● = Standard feature.

**Traffic Programme volume adjustment** allows the volume of Traffic Programme announcements to be adjusted.

**Autostore function for FM and MW** automatically tunes and stores the strongest available FM and MW stations ready for push-button selection.

**Autoreverse function** automatically changes the direction of playback when the end of the tape is reached.

**Cassette programme search** enables a particular track on a cassette to be found or repeated by searching for the gaps between the tracks.

**Fault diagnosis facility** allows the audio unit to be connected to Vauxhall's automatic fault finding system.



## Navigation



*NCDR 1100 stereo radio/CD player/navigation system.*

All Frontera Estate models can now be specified with a state-of-the-art, fascia-mounted navigation system.

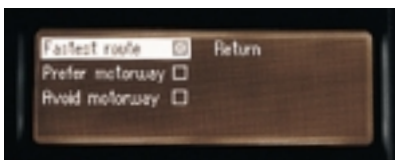
The NCDR 1100/1500 stereo radio/CD player/navigation units use the international network of GPS (Global Positioning System) satellites linked to a comprehensive CD-ROM mapping system to determine your precise location and guide you to your chosen destination virtually anywhere in mainland Britain. Despite its technical sophistication, the system is very simple to operate, using a range of menu-driven options.

Clearly spoken instructions indicate the road you need to take or the lane you need to be in, both well in advance and again when the manoeuvre is due. Directional pictograms, clearly shown on the special multi-function display screen, back up the spoken commands. The system can also display a list of roads and streets through which your vehicle must pass to reach its destination, including the distance of travel along each section.

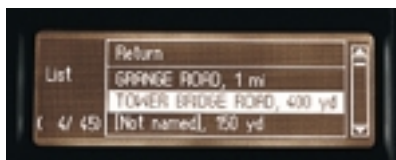
The CD-ROM supplied with both the NCDR 1100 and 1500 units covers all major link roads and streets in towns and cities across the whole of mainland Britain. Discs are updated twice a year and are available at extra cost by subscription.

### NCDR 1100/1500 system features

- Automatic re-routing on request
- Display of estimated time remaining and distance to destination
- Exact location of vehicle using the GPS (Global Positioning System) and speed sensor
- Choice of four different route types:
  - Using motorways where possible
  - Avoiding motorways
  - Shortest distance
  - Shortest journey time
- Up to 100 personal destinations can be stored
- 'Points of Interest' menu offers a wide choice of popular destinations
- Last 10 destinations stored automatically
- CD-ROMs available for all major European countries



*'Route type' menu allows simple selection of preferred route.*



*Route information shown as a list giving details of road names and distances.*



*Navigation display showing easy to follow pictograms.*

## The Vauxhall carphone



*NCDR 1500 stereo radio/CD player/carphone/navigation system.*

For Frontera Estate, Vauxhall offers the sophisticated NCDR 1500 (which comprises a stereo radio/CD player with built-in carphone and navigation functions). All functions are fully integrated into one unit and are operated via the same control panel and multi-function display located in the fascia.

The carphone unit offers state-of-the-art GSM mobile phone functions. You simply

insert your existing mobile phone SIM card (an adaptor may be required), then make and receive calls through the remote microphone and car audio speakers. The carphone's 'hands-free' operation allows the driver to not only conduct a telephone conversation, but make, receive and end calls with both hands safely on the steering wheel. The factory-fit installation means that the whole system is of original equipment quality and comes with a full Vauxhall warranty.

**Please note:** At present, the NCDR 1500 carphone is only compatible with the GSM 900 frequency (i.e. Vodafone and Cellnet – though not with Cellnet's pre-paid SIM card). It is not compatible with the GSM 1800 frequency (i.e. Orange and One-2-One).

### Integrated carphone features

- GSM phase 2 standard
- Integrated SIM card reader
- Hands-free operation
- Interface for external handset
- Emergency call facility without SIM card
- Menu for phone-specific settings
- Voice transmission
- SMS messaging service
- Microphone mute function
- Call reminder for last 10 incoming calls in absence
- Redialling of last 10 phone numbers
- Multiple calls and conference calls
- Phonebook for SIM card dependent number of entries
- Recall of stored names
- Full editing of stored names or messages

## Factory-fit telephone wiring loom

Helping to keep Frontera drivers in touch at all times, a telephone wiring loom is available as a factory-fitted option, at extra cost, on all Frontera models that do not have the NCDR 1500 carphone installed. The system allows drivers to listen to incoming calls via the car's audio speakers and can even provide an incoming call message via Frontera's built-in multi-function display panel.

The telephone wiring loom is fitted in the factory to ensure full compatibility with the car's original wiring, eliminating the problems often associated with aftermarket systems.

The telephone wiring loom comprises an integrated harness for a mobile phone complete with power and aerial connections.

The wiring loom is compatible with both the GSM 900 and 1800 frequencies.

# Colour and trim availability

Frontera's interior colour and trim combinations, available in cloth and leather, have been carefully selected to complement the exterior paintwork while reflecting the individual status of each model in the range. All Vauxhall dealers have a comprehensive showroom colour and trim display (excluding leather trim), with actual exterior paint and interior trim samples, available for inspection.

Exterior colours	Model, trim name and trim colour					
	RS Vent cloth	Sport models RS Leather <sup>1</sup>	Olympus Chequers cloth and Leather	Limited Vent cloth	Estate models Limited Leather <sup>1</sup>	Olympus Chequers cloth and Leather
<b>Solid colours</b>						
Glacier White	Grey/Blue/Green	Grey	–	Grey/Blue/Green	Grey	–
Flame Red	Grey/Blue	Grey	–	Grey/Blue	Grey	–
<b>Two-coat metallic colours<sup>2</sup></b>						
Star Silver	Grey/Blue/Green	Grey	Grey	Grey/Blue/Green	Grey	Grey
<b>Two-coat pearlescent colours<sup>2</sup></b>						
Nocturno Blue	Grey/Blue	Grey	–	Grey/Blue	Grey	–
Krypton Green	Grey/Green	Grey	–	Grey/Green	Grey	–
Barolo Red	Grey/Blue	Grey	–	Grey/Blue	Grey	–
Midnight Black	Grey/Blue/Green	Grey	Grey	Grey/Blue/Green	Grey	Grey

– = Exterior colour listed is not available on this model.

1 = Leather trim is available at extra cost. 2 = Standard on Olympus and Estate Limited V6, optional at extra cost on Sport RS and Estate Limited.

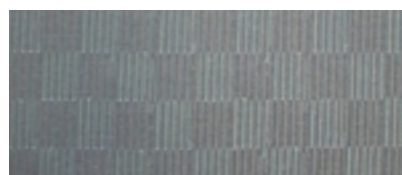
## Trims



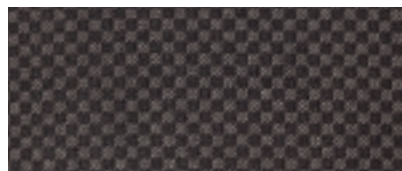
Vent cloth in Grey.



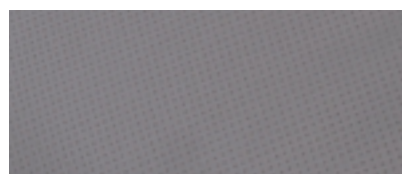
Vent cloth in Blue.



Vent cloth in Green.



Chequers cloth in Grey.



Grey Leather.

## Colours

### Solid



Glacier White



Flame Red

### Two-coat metallic



Star Silver

### Two-coat pearlescent



Krypton Green



Nocturno Blue



Barolo Red



Midnight Black

### Please note:

Due to the limitations of the printing process the colours reproduced may vary slightly from the actual colour. As a result they should be used as a guide only.